



LACEY HISTORICAL SOCIETY
NEWSLETTER

SUMMER 2012



A Gathering of Roger Easton's Family and Friends

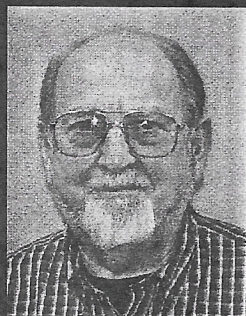
On July 18, 2012 a "Gathering of Family and Friends" took place at the Jacob Smith House in Lacey. This newsletter may help to show the historic community's sense of respectful appreciation for Roger's invaluable research skills.

Roger had just completed transcribing the George Himes Diary from 1858 to 1868 for the Lacey Historical Commission. His burial was held at Woodlawn Cemetery, where his parents are buried.

"Historian's death a major loss for our region" was John Dodge's *Soundings* article in the July 5, 2012 *Daily Olympian*.

Roger's sister, Molly Swenson, shared this with John Dodge: "Roger's daily mantra was: Happiness is something to love—something to do—something to look forward

to—his happy days were in Washington. He looked forward to each new day and new project." Roger's goal was to bring the many Thurston County Historical Groups together. He devoted his life to the research that helped EACH of us. With Roger's passing and our deep loss—Roger may have accomplished this goal. The community was left with a strong desire to carry on Roger's mission for cooperation and partnership.



Roger's Accomplishments

- 35 years as a North Thurston Public School District teacher.
- 18 years on the Lacey Historical Commission.
- 2003 Lacey Historian of the Year.
- 10 years on the Olympia Heritage Foundation.

SPECIAL POINTS OF INTEREST:

- On July 18, a group of Roger's family and closest friends in the local and historical community abroad gathered to remember the historical sacrifices he made for Thurston County during the course of his life.
- On July 2, Roger Easton, one of the most dedicated historians in the area, passed away at St. Peter's Hospital.
- September 25 marks the Lacey Historical Society annual meeting

In Memoriam - Roger Easton

On the evening of Monday, July 2, Roger Easton, one of our most dedicated historians and historic preservation volunteers died at St. Peter Hospital, in the caring company of family and friends. He was hospital-

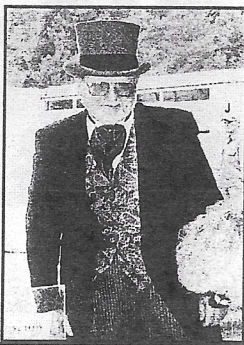
ized Wednesday with serious health issues, slipped into a coma Thursday night and never regained consciousness. He was 74.

Roger obtained two degrees from St. Martin's University after attending full-time for six years. Roger taught for 35 years in

the North Thurston Public School District, most recently at Chinook Middle School in the History Department. Among his many contributions to local historic preservation, Roger served for 18 years on the Lacey Historical Commission, as well as on the

INSIDE THIS ISSUE:

A GATHERING...	2
IN MEMORIAM	2
TCTT DECADES	2-3
DECADES PHOTOS	2-3
LHS MEETING	3
RSVP FORM	3
JOIN THE LHS!	4



Roger Easton dressed in historical garb at a past local event commemorating history in Thurston County.

"I STAND READY TO DO WHATEVER IS NECESSARY TO PROMOTE HISTORICAL PRESERVATION WITHIN THE CITY OF LACEY,"

- ROGER EASTON, IN A 1994 LETTER TO THE LACEY CITY COUNCIL

IN MEMORIAM (CONTINUED FROM PAGE 1)

Thurston County Historic Commission, and for 10 years on the Olympia Heritage Commission. He was an original member and served as president of the Bigelow House Preservation Association and was a founding member of the Olympia Historical Society.

Roger devoted thousands of hours of his time researching and cataloging local history, most recently transcribing diaries written in 1858 – 1867 by George Himes. Roger was a regular volunteer at the Washington State Archives.

Roger was instrumental in assisting with pre-

serving and perfecting the historic Wilder and White and Olmsted design principles of the State Capitol Campus in regard to the view corridor and Capitol Lake.

Since beginning his historical pursuits nearly 40 years ago, Roger perhaps summarized his future impact on preserving local history best in a letter of interest to join the Lacey Historical Commission which he sent to the Lacey City Council in 1994. Roger assured the Council that, "I stand ready to do whatever is necessary to promote historical preservation within the City of Lacey." On September 25, 2003, Roger Easton was

named the Lacey Historian of the Year by the Lacey City Council.

On December 5, 2016, when the new Lacey Museum is set to be completed to celebrate Lacey's 50th Birthday, we will be reminded that the true backbone of our city isn't simply that we preserve our past; instead it is the fact that we have citizens like Roger, ready to do what is necessary to ensure that the future of this city is even brighter than our historical beginnings.

Roger's family moved to Thurston County around 1950. Roger is survived by an older brother and sister, who live in California.

THURSTON COUNTY THROUGH THE DECADES: A WALK IN THE PARK

The Lacey Historical Commission invited people of our county to travel back in time on May 12, 2012 to *Tour Our 1920s Era Town* at Hunter Park.

The concept of recognizing our history as "eras" began with the Tumwater Historical Association when they honored the 1825-1850 era at Tumwater Falls Park.

South Sound Historical Association chose the 1850-1875 era, which was celebrated at Tenino City Park. The 1875-1900 era was co-hosted by Tum-

water and Thurston County Historical organizations at Tumwater Falls Park.

Plans for the fifth era this autumn are underway.

Please contact Anne Kelleher at (360) 539-8839 or Karen Johnson at (360) 748-7657 for information or to get involved. Special thanks go out to Carol Hannum, local artist and historian, for her sketches done at the most recent event held in Lacey, Washington. To view a complete copy of the sketchbook, visit the Lacey Museum at 829 Lacey Street.



Shirley Dziejdzic and Matthew Connor don 1920s fashion during the Thurston County Through the Decades event.

LACEY HISTORICAL SOCIETY ANNUAL MEETING

The history of our race track will be celebrated at Lacey's Historical Society's Annual Meeting on September 25, 2012 at the Lacey Community Center.

In 1891 our track, then named "Woodland Driving Park," had the reputation of being the best laid track west of the Mississippi River. This was attributed to its base of crushed oyster shells, which helped create excellent

drainage.

The Northern Pacific Railroad brought the many visitors attracted by the race track and the area's several lakes and other amenities. The depot was located along Pacific Avenue, near present-day Clearbrook Drive. The railroad tracks have become the Lacey Woodland Trail.

It was the era of "Picnic Basket Socials." A nearby orchard was available

for travelers and others to relax and visit. The Lacey Hotel provided accommodations for longer visits by out-of-town travelers.

To reminisce, a "Picnic Basket Social" will be served at the annual meeting. The menu will consist of Chicken, coleslaw, biscuits, relishes, watermelon, cookies, and drinks.

Please send your reservation for the September 25 event by September 18.

For the RSVP

When: Tuesday, September 25, 2012

Time: 5:30 p.m. to 8:00 p.m.

Place: Lacey Community Center, 6729 Pacific Avenue SE, Lacey

Dress: Old fashioned summer picnic attire

Menu: Roasted chicken, coleslaw, biscuits, cookies, and watermelon.

Please join us at the Lacey Community Center for the Lacey Historical Society's Annual Meeting, where we will take a step back in time and enjoy a picnic at "Lacey's Woodland Driving Park." The program will feature visitors from the past who will recall good times at the race track and its surrounding park. Picnickers will be encouraged to share their memories of the race track.

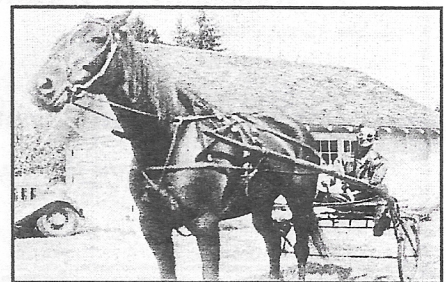
Please RSVP by September 18 by mailing the form to the right to:

Lacey Historical Society

P.O. Box 3324

Lacey, WA 98509-3324

Or by calling Shirley Dziedzic at (360) 491-0905



Name _____

Yes, I will attend!

Number of People in Party _____

Telephone Number: _____

No, I cannot make it this year.



A sketch of Roger Easton at "Thurston County Through the Decades," by Carol Hannum.

LACEY MUSEUM AT THE DEPOT PRELIMINARY SITE PLAN COMPLETE

In 2016, Lacey will dedicate a new museum facility marking 125 years as an established community. The building will be a replica of the 1891 train depot that stood along present-day Pacific Avenue — originally it was the rail line for the Northern Pacific Railway (NP RR).

For more information on the project, contact Museum Curator, Amber Raney: (360) 413-3557 or, araney@ci.lacey.wa.us.

