

NEWSLETTER

Lacey Historical Society

Spring 2012

Thurston County Through The Decades 1900-1925

On Saturday, May 12 at Huntamer Park, the Lacey Historical Commission, Lacey Museum and the Thurston County Heritage Community will host the latest installment in the series of events celebrating the history of Thurston County. Join the fun, take the opportunity to wear vintage clothing and stroll through a 1920's era town, complete with the following activities:

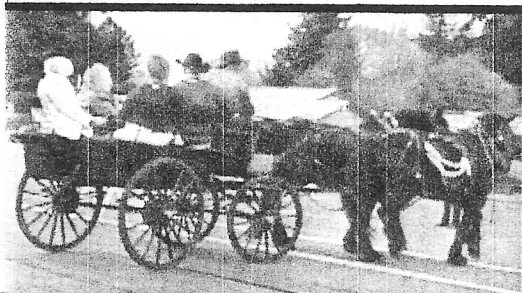
- General Store
- Church
- School
- Police and Fire
- Hotel
- Hobo Camp
- Medical
- Railroad Depot
- Logging
- Capitol Building
- Grange & Agriculture
- Silent Movie
- Cedar Shakes
- Speakeasy

Thurston County
Through the Decades May 12

Huntamer Park
10:00 AM to 4:00 PM: Walk about a
1900-1925 Thurston County town
5:00 PM—6:00PM: Dixieland music,
cake and coffee

~Come in costume to relive a day in
Thurston County History~

A LOOK BACK 100 YEARS



Lacey Fun Fair and Grand Parade

To celebrate the 25th Anniversary of the Lacey Fun Fair, the City of Lacey has decided to hold a Grand Parade on Saturday, May 19th. It will start at 6 PM and go from Pacific Avenue at Bowker Street to Huntamer Park. The Lacey Historical Society has decided to

accompany the Lacey Historical Commission entry, which will promote the opening of the new Lacey Museum at the Depot in 2016. Although details haven't been worked out yet, we anticipate that we will need an historic vehicle in which the members can ride. Anyone who has access to such a vehicle and is

willing to share it with us for the event, please contact Shirley Dzedzic at 491-0905.

Emeline Ruddell Kilber
Lacey Parade Grand Marshall
All photos courtesy Lacey Museum

In this issue:

May 12: Take a Step
Back in Time -
Thurston County
Through the Decades.

May 19: Lacey Fun
Fair

Sept. 25: Lacey
Historical Society
annual meeting .

"A Day at the Races"

Special points of interest:

- Our newsletter has a new look and layout! What do you think?
- A new section, "memories" begins with this issue. Don't miss it.
- What's happening at the museum? See page 2, inside front cover.
- The Woodland Driving Park

Memories...

Shirley Dzedzic—

Our family came to Lacey on Labor Day, 1960. Our home since then has been on Lacey Street. During those 52 years another identification name has become my heritage: Lacey Historic Neighborhood. My story tells about this "history."

Early after Lacey's Incorporation on December 5, 1966, the historic Russell House located next to Fire District 3 station became the Lacey city hall and police station. It was on Pacific Avenue between Bowker and Lacey Streets (the southern boundary of this neighborhood). After the new city hall was built, the old city hall/police station building was moved about one-half block to a site donated by the Lacey Women's Club behind their club house. It became the City of Lacey's museum, serving Lacey's citizens for 45 years. Exciting plans are happening for a Lacey Museum at the Depot in 2016, the 50th anniversary of the City of Lacey!

Memories...

Amy Turner—

Lacey School had a janitor in bib overalls named Bill Southwick. Bill was a gentle man that adored children and you'd see kids sitting with Bill and many times giving Bill hugs! A sight you would not see in today's world. Mrs. Couch was a great 4th grade teacher, as all our grade school teachers were! Mrs. Couch was deathly afraid of mice and one day in her desk drawer found what she thought were mouse droppings. She immediately called our school janitor, Bill, to come and get this mess cleaned up for her.

A few minutes later, Bill rushed in and wetting his finger as if to taste declared "Yes it certainly is!" Mrs. Couch didn't know at the time, Bill in his mischievous nature had planed some black licorice shredded fragments into her desk drawer. He was one of a kind, but always jolly!

Another antic of Bill Southwick was when my mother was cooking a dinner in the old Lacey School cafeteria in the basement of the wooden structure. Mom was president of the Lacey School Club and the playground needed some equipment, so a ham dinner was a way to raise funds. She had cleaned the kitchen after serving the dinner and feeling everything was back in place for the cooks the next day, picked up her purse and a huge amount of school silverware fell out spilling on the floor. Bill was there to "accuse the thief" of making off with the old post-war silverware as a joke!

Memories...

Bob Krier—

One of the rewards I receive as a trustee for the Lacey Historical Society is the opportunity to share memories of my early days in Lacey. In 1945 my parents purchased a 25 acre parcel of land between College Street (Herman Road) and Golf Club Road. In earlier years it had been a chicken ranch, and some of the frame chicken coups were still standing. The property was full of scotch broom.

Fourteenth Avenue did not exist, but was built by dad when he platted the property as the Krier subdivision and named the street "Elizabeth Avenue" as a tribute to my mother. World War II had just ended when Dad built our house at the corner of Elizabeth Avenue and Golf Club Road. Building material was very scarce and he even used a few boards from the chicken coups. Across the street was one of the first housing developments in Lacey being built to accommodate the returning veterans. It is called "Friendship Addition." Mountain View Golf Course (located where Panorama is today) was very active and occasionally I would get a job as a caddy (I was almost as tall as the golf bag).

I will always remember my wonderful days attending Lacey Grade School, graduating from the eighth grade in 1948. My favorite teacher was Mrs. Fleetwood. Her skills and dedication to the teaching profession, particularly arithmetic, left an everlasting impression on my life. My memories continue to be refreshed at our Lacey Grade School reunions every two years.

My eighth grade classmates take honors for the highest attendance at the reunions. I would be remiss if I didn't mention our basketball team. It was the first year Lacey was included in the Olympia City League. Our new eighth grade teacher and coach, Mr. Lenny Bee, guided us to be co-champions of the league. I think we made quite an impression on the community and surprised a few Olympia folks.

So many memories and such a pleasure to share a few of them with all of you. Thank you.

New at the Museum

1) In March Amber installed at the Lacey Timberland Library an exhibit featuring photographs and artifacts from the time period 1900 to 1925 to highlight the upcoming **Thurston County through the Decades** event to be held Saturday, May 12 at Huntamer Park. The exhibit will be moved to Lacey City Hall in April.

2) Bob Ray has donated numerous photographs which include images of the Larson Garage and Lacey School students. The building that housed the Larson garage is still standing. It sits on Pacific Avenue next to Lacey Shoe Repair.

Tom Huntamer remembered that some of the students from Lacey attending Olympia High School would catch the school bus at the garage.

3) Amber has once again received a grant from Thurston County to continue scanning the George Himes diaries held by the Oregon Historical Society. The Himes Donation Land Claim is now the site of the Lacey Community Center. The prior grant covered the years 1858 to 1867. The scanned images are being transcribed by Roger Easton.



Memories

"His" story and "Her" story have been one of the many strands of learning since history began in a garden.

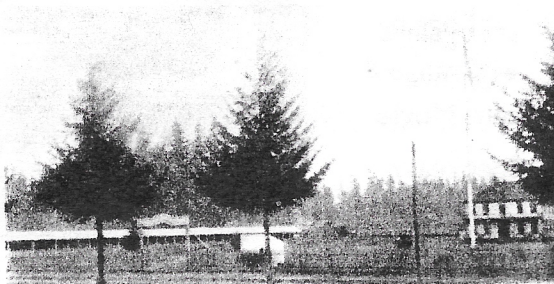
Today's history is now being told with 21st century technology.

Our Lacey Historical Society meetings (open and welcome to all) provide an opportunity to share experiences as well as new information among the trustees about Lacey's early history.

Today's Spring Issue begins a Memories section. We hope our sharing will spark your memory of a special occasion to share with us and your LHS Newsletter friends. The 50th anniversary of the incorporated City of Lacey is only 4 years away in 2016...what do we remember?!

The Woodland Driving Park

Among the events of the pivotal year 1891 in Lacey history was the opening of a race track and hotel in the community then known as Woodland. The Woodland Driving Park was the creation of former Olympia mayor Isaac Ellis hoping to provide a place for local racing fans. Both newspapers of the day, the *Morning Olympian* and the *Washington Standard*, described the mile long oval track and twenty-three room hotel in glowing terms, noting also their convenient location along the Olympia-Steilacoom Road and near the newly completed depot servicing a spur of the Northern Pacific Railroad.



The race track was a fixture in the Lacey community from 1891 until 1976 when it became the site of the Clearbrook subdivision and the Lacey Downs shopping center. Over the life of the track, horse racing did take place, but infrequently. More commonly it was used for winter training and because Ellis had created a park-like setting around the hotel complete with orchard and open fields, Woodland Park attracted picnickers arriving by horse and buggy, car or train regardless of what was happening at the track. The Lacey Historical Society will be returning to

that era:

on - September 25, 2012

for - Annual Meeting

where - Lacey Community Center

from - 5 PM to 7 PM

to - revisit Lacey's Woodland Driving Park

and - to have an old fashioned picnic.

If you can share memories about the track, Please contact by mail at P.O. Box 3324 Lacey, WA 98509-3324, telephone Shirley @ 360-491-0905 or e-mail: araney@ci.lacey.wa.us

Join the *Lacey Historical Society*

2012 Annual Dues

Name _____ phone _____

Address _____

City/State/ZIP: _____

Seniors/Students: \$5.00 - Individuals: \$10.00

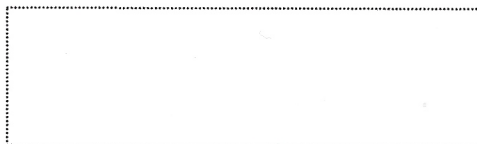
Family (Household): \$15.00 - Business: \$25.00

Please mark any funds sent the society Dues \$ _____

Donations \$ _____

Both dues and donations are tax deductible.

Thank you for your continued support in preserving Lacey's Heritage



P.O. Box 3324, Lacey WA 98509-3324

Lacey Historical Society