

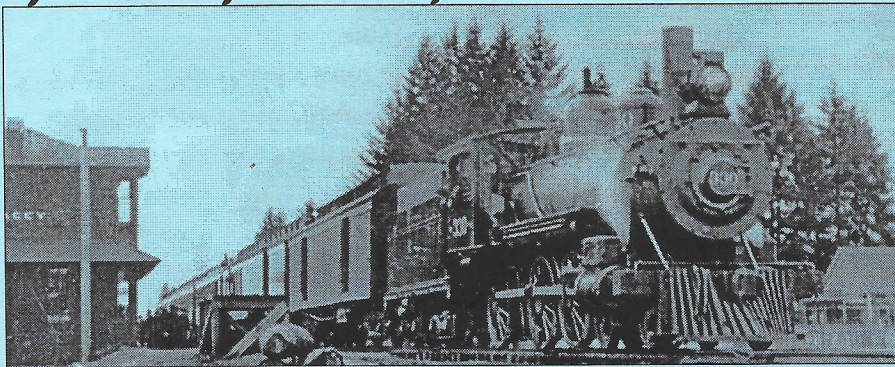


# Lacey Historical Society

Lacey Community Museum - Dedicated 1980

Volume 10 Issue 2 August 2010

## ALL ABOARD!!



It's Springtime in 1891 and travelers are riding Northern Pacific's Engine 330 train that stops at Lacey Depot. Why? Woodland's famous Sulky Racing track. The nearby Lacey Hotel offers a restful night's sleep. The U.S. Postal Service has just granted

the community its own post office however would not allow it named Woodland . . . since that name was already in use by another post office. The name *Lacey* was selected instead. The Lacey Historical Society is traveling back to 1891 at their Annual Meeting September 28, 2010 at the Lacey Community Center on Pacific Avenue. They will be honoring two important citizens from that era. George Carpenter and Isaac Ellis. Amber Raney, Lacey's curator will represent Northern Pacific Railroad in telling us about the Lacey Depot of 1891 and the replicated depot as museum that is planned for 2016. You may reserve your 1891 train ticket by completing and returning the reservation form found on page 3. **Remember, this year's Annual Meeting will be held at Lacey's Pacific Ave. Community Center on September 28.**

## Summer Thank Yous

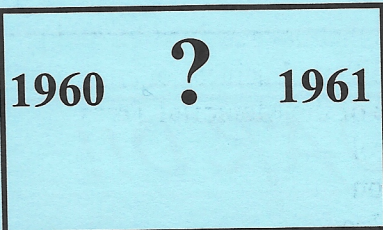
**June 10, 2010: Lacey City Council Meeting**  
June is "Lacey History Month" and the 2010 *Lacey Historian of the Year* was awarded to Lanny Weaver! The Society is so very proud of her recognition following more than two decades of researching Lacey's rich history and generous volunteering. *(continued page 2)*

## In This Issue

"All Aboard" Annual Meeting	page 1
Summer Thank Yous	page 1
Missing School Pictures	page 2
Summer Thank Yous	page 3
"All Aboard" Reservation	page 3



## Where is an 8th grade photo of 1960 - 61?



*Lacey's Grade school's final 8th Grade Class?*

There are six 8th grade classes recorded in North Thurston Public School archives for the 1960-61 school year. These six records list both student's and teacher's names. Was your 8th Grade teacher .... ?

*Jim Erickson                      James Stuart                      Joyce Messer*  
*Nancy Vander Meer              Gunmar Trantum              Dallas Vaughn*

The Society's "Keepsake Page" committee:

Nora Brown - 360-491-0504

Bob Krier - (neonbob@juno.com) 360-491-8325

Amy Turner - (amyturner@q.com) 360-236-0162

want to be contacted relating to these two eras, the 1950s and 1960s especially.

These 8th grade classes are complete:

1920s	5	1925 - 1930
1930s	2	1930 & 1936
1940s	4	1940 - 1946 - 1947 - 1948
1950s	1	1959
1960s	0	(1960 - 1961 was the final year)

Your continued sharing and help is really appreciated.

*(continued from page 1)*

### *More Summer Thank You's*

**June 12, 2010:** Sixteen Timberline "Land Lab" students from Ken Marmion's class volunteered to create 32 healthy treewells for the Memorial Trees planted on our Eastern property line. What a great job they did for us! **Thank you so much!**

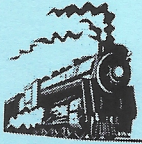


(continued from page 2)

**July 31, 2010:** A big "Financial Thank You" for your 75 paid membership support. Also, to the generous donations that have arrived including that surprise anonymous donor. We are most grateful to these business organizations for their professional support:

- Wolbert's annual care of the Memorial Trees
- Carnahan's Pest control
- Champion Construction
- Tanglewilde Lumber Inc.

**August 1, 2010:** The Lacey Curator, Amber Raney and the "Keepsake Pages" Committee want to express their gratitude for the successful outpouring of information received at the 2009 Lacey School Reunion. Their heartfelt "**THANKS**" for sharing your school life with them.



**Reservation Form 1891 Train to Lacey Depot**

**Engine 330 Departs: Lacey Community Center September 28, 2010 @ 5:00 P.M.**

**Arrives: Lacey Community Center September 28, 2010 @ 7:00 P.M.**

Please mail your reservation to: Lacey Historical Society, PO Box 3324, Lacey, WA 98509-3324, or you may call 491-0905. I'm coming and will need \_\_\_\_\_ tickets

Name(s) \_\_\_\_\_

Phone \_\_\_\_\_

**Box Lunch Choices:**

Please enter number of sandwiches wanted and Bread type

Turkey \_\_\_\_\_ Ham \_\_\_\_\_ Veggie \_\_\_\_\_ On: Hearty Bread \_\_\_\_\_ Croi \_\_\_\_\_ page 1

Please choose a dessert:  Homemade Brownie  Granola Bares page 2

Apple  Grapes  page 3

DONATIONS TO COVER CENTER RENTAL AND FOOD COST ARE GREATLY *tion* page 3