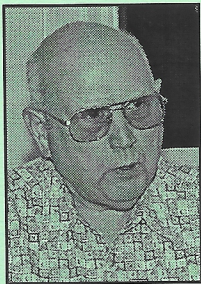


Chambers Prairie Log Cabin



Meet Your Newest Trustee
Lacey Historical Society ~ 2006



Dick Johnson
Trustee
Chair, Olympia Genealogical Society
Chair, April 2006 State Conference, Wash. State Genealogical Society
Thurstoneer*
Marcus McMillan, Pioneer

* *Thurstoneers*
are direct descendents of settler pioneers.

Trustee Comments

Nora Brown and Paul Henderson:

Asking pioneer family members to share their stories and photographs so that they can be saved for future generation to see and know.

Amy Turner:

Requests more names of Lacey Grade School students that need to be added to the "Roster List" . Pleas call and leave a message - 360-236-0162.

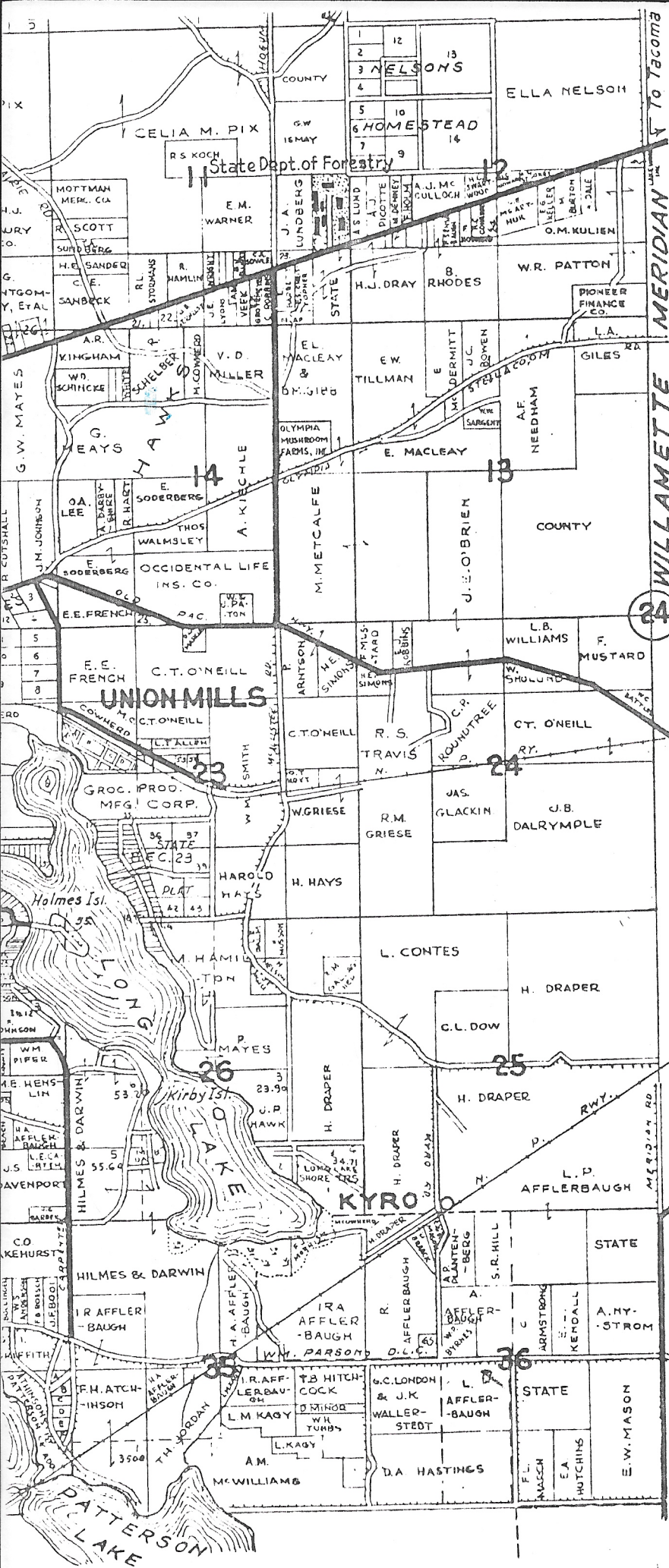
The Principal's Chair

This historic chair belonged to Ted McArthur, Principal of Lacey Grade School 1935 - 1958. When teacher Joe Hale saw the chair in pieces in the school's furnace room he only saw the beauty of the wood!

The end of this story is shown in the photo. A beautifully restored historic chair by the future principal, Joe Hale, that honors his former principal.

The daughters of Ted McArthur, Penny Burkhalter and Joanie Guggenmos stand with Joe Hale as the restored chair is accepted for display in the Lacey Museum's school room exhibit.





- 19- H. SCOTT ET AL.
- 20- J.H. SCOTT ET AL.
- 21- R. SCHELPER
- 22- V.W. MACKAY
- 23- J.L. KRESS ET AL.
- 24- E.H. STEPHENSON
- 25- V. CANFIELD
- 26- A.H. THOMPSON
- 27- T.A. LACHANCE
- 28- H. RIEFLIN
- 29- C.L. BENSLEY ET AL.
- 30- I.W. MITCHELL
- 31- F. WRIGHT
- 32- L.M. WALUMARK
- 33- H.A. FARRINGTON
- 34- W.J. ISAACSON
- 35- L. ENSIGN
- 36- G. BRYANT
- 37- R. EBBERT
- 38- A. BELTON
- 39- R. VALLETTE
- 40- W. WESTOVER
- 41- E. KINKAID
- 42- H.M. HOLLINGSWORTH
- 43- B. BOLTINGHOUSE
- 44- H. SCHRIMMER
- 45- M. MCCRACKEN
- 46- C.E. HALL
- 47- RUSSELL'S EAST PARK
- 48- D. GAMMELL
- 49- L.J. BORDEAUX
- 50- H.A. CAMPBELL
- 51- R.A. JOHNSON
- 52- D.L. WATKINS
- 53- C. NELSON
- 54- O. GRAY
- 55- HOLM ET AL.
- 56- E.S. TAYLOR
- 57- M.H. BURNETT
- 58- L.H. MORGAN
- 59- L.A. TINDLELL
- 60- ST. MARTIN'S COLLEGE
- 61- R. TRIEBER
- 62- W.B. AREHURST
- 63- J.F. SPENCER
- 64- N.E. CHRISTOFFERSON
- 65- A.P. PLANTENBERG
- 66- FRIENDSHIP ADD #1 (UNRECD.)
- 67- FRIENDSHIP ADD #2

BERRY FARMS ADD

- 1- L.A.H. PETERSON ET AL.
- 3- W.A. STACEY
- 4- G.A. HOJEM ET AL.
- NR5- O. HANKE
- NR5- A. PEARSON
- NR6- E.M. GANS
- SR6- M.C. PLATT
- 7609- J. HANNIGAN
- 10- W. STILLWELL
- 11- C. SYLVESTER
- 12B13-(E OF RD) FA. GLIDDEN (W OF RD) R. VALLETTE
- 18- F. MARELUS
- NR15- M. GRONKA ET AL.
- SR15- V. LEWIS
- 16- G.A. LARSON ET AL.
- 17- M. GREGORY ET AL.
- ER 18B19- C. PETERSON
- W 18B19- M. BURTON
- 20- U.E. CHAMBERLAIN
- NR21- J. LAWTON
- SR21- E. SCHMIDTKE
- 22- C. MCCURDY ET AL.
- 23- F.E. POPE ET AL.
- 24- S. ENGLE
- 25- A.R. STANFORD
- 26-27- F. SCHMITT ET AL.
- 28- A. WOOLLETT ET AL.
- 29- E.V. DREWRY
- 30- M.W. WEISBERG
- SR 31- H. WENTJAK
- 31- D. LEMIEUX

LEACHE'S JOHNSON HILL TRACTS

- 1703- F.J. CORNELIUS
- 2- W.M. L. MUIR
- 5- J.H. HICKMAN ET AL.
- 6- A.H. MASCHNER
- 7- G. WILLHITE
- 8 to 12- F.J. CORNELIUS
- 13 to 15 & 17- W.J. BLANKHARD
- 16- C.J. ZEIGLER

McMANUS SUBD.

1708- N SEVERANCE

NELSON'S HOMESTEAD TR'S.

- 1704- J.K.L. MITCHELL ET AL.
- 5700, 13- H- VC KILLINGER
- 11- PLATTED AS "MALLISTER PLACE"
- 12- O. MAIDER

COLLEGE CITY BERRY TR'S

- 1703- H.W. LIEBHART
- PR 182- H.B. BAILEY
- 4-5- F.O. ANDERSON
- 6-4 BRASSEY
- 7- W.J. WHITTIER
- 8- LEWIS CO. SAW & LN.
- NR9- C. BELLS
- SR9- J.H. INGLE
- 10- L.H. BRASE
- 11- C.H. THOMPSON ET AL.
- 12- C.R. THOMPSON ET AL.
- 13- L. YEAGER
- 14- C. LAPRATH (LESS 500'-) M. BLANCHETTE
- 15- D. PRICHARD
- 16- R.A. SWANSON
- 17- G. ELDER (LESS 5100'-) D. ROSENOFF
- 18- JOHN STOLL
- 19- R. ENSIGN ET AL.

--LEGEND--

- PAVED ROADS
- STATE HWYS. UNPAVED
- IMPROVED ROADS
- DIRT ROADS
- INFERIOR ROADS
- RAILROADS
- TRAILS
- INTERMITTENT CREEKS
- SCHOOLS