



Lacey Community Museum - Dedicated 1980

Lacey Historical Society

Volume 01 Issue 1 March 2001

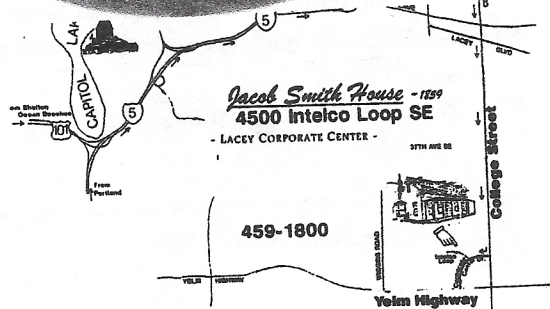
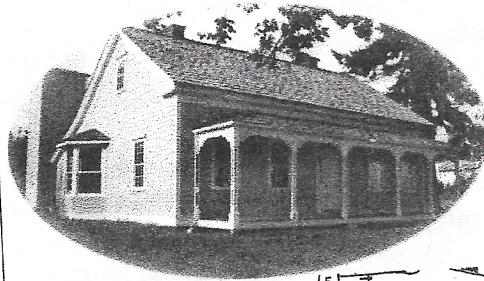
New Homes . . .

The Lacey Historical Society's permanent meeting address is now the **JACOB SMITH HOUSE** (see map and picture).

Randy Orth, owner, encouraged our Society to hold all of the eight monthly Trustee meetings as well as to continue the Annual and Lacey School Reunion meetings on this site. His generous offer of a permanent location that is so historically correct (*listed on the Thurston County Historic Register*) was warmly accepted.

Calendar of Events for 2001

- ◆ April 18 Trustee's Mtg. 2-3:30 PM
- ◆ April 29 Gallagher Garden Dedication
Lacey Museum 2-3:30PM
- ◆ May 5-6 Lacey Fun Fair Sat 10-7PM
Sun 11-5PM
- ◆ May 16 Trustee's Mtg. 2-3:30 PM
Luncheon at Falls Terrace
- ◆ June - August Summer Vacation
- ◆ Sep. 12 Trustee's Mtg. 2-3:30 PM
- ◆ Sep. 16 Lacey Sch. Re. Noon-3PM
- ◆ Oct. 17 Trustee's Mtg. 2-3:30 PM
- ◆ Oct. 28 **Annual Mtg.** 2-3:30 PM
- ◆ Nov. 21 Trustee's Mtg. 2-3:30 PM
- ◆ Dec. No Mtgs. - Merry Christmas



Continued on page 2

Inside This Issue

<i>New Homes</i>	page 1-2
<i>In Memoriam</i>	page 2
<i>President's Report</i>	page 2
<i>Thanks and Appreciation</i>	page 2
<i>Gallagher Garden Dedication</i>	page 3

Continued from page 1

Q.F.C. — Safeway

On March 4, 2001 the Q.F.C store at the corner of Pacific Avenue and Carpenter Road was purchased by Safeway, Inc. The Bell Tower and the 1928 Arches were protected by the North Thurston School District sale agreement with Q.F.C.

Barbara Richardson, Safeway's Real Estate Agent said "Safeway will honor their historical memorial."

Q.F.C.'s stewardship has been of the highest quality in their three-year involvement with the Society. Our support of their business was not enough to make the difference economically. Q.F.C. has left us a beautiful heritage to the Old Lacey School's memory.

--- In Memoriam ---

- ◆ Agnes Kenmir
- ◆ Leona "Nonie" Yarboro
- ◆ Bill Weatherbie

-- "Thanks and Appreciation" --

The Society sends special thanks and appreciation to the family of Bessie Yates Miller for the estate gift donated to the Society in her memory

~ President's Report ~

The Annual Meeting, 2000, elected two new Trustees: Dennis McHugo and Tony Zinicola. Dennis and his wife Peggy Witte McHugo are members of long standing. They also have been giving memberships as birthday gifts to a brother, John Witte Jr. and a sister, Diane Doerge for many years.

Tony Zinicola recently moved into the Old Lacey neighborhood purchasing Dr. Ehler's home. Last Summer he was the principal spark behind the Lacey Neighborhood summer picnic.

Welcome Aboard!

Frank Welter, Trustee has been asked to rejoin the Lacey Historical Commission. They wanted to recreate the liaison that Frank had built between the Society and the Commission. We, also, felt steps should be taken and have begun a rotating monthly attendance at their meetings.

Your Lacey Historical Society officers for the year 2001 are: *President* - Shirley Dziedzic, *Vice President* - Larry Petty, *Treasurer* - Dr. William Ehlers, *Secretary* - Judy Hildebrandt.

The Society's Mission

To be a voice for the early citizens of Lacey and to be their stewards protecting the historical heritage they have given us!

Gallagher Garden Dedication

The Lacey Historical Society invites you to attend a special dedication program on April 29, 2001 at 2 PM at "The Remembrance Place" on the Lacey Museum grounds at 827 Lacey Street.

Seven past and present individuals are to be recognized for their historical contributions to Lacey.

Two of them are participants in the Department of Natural Resources' "Trees for the 21st Century". this DNR program was begun by recent Land Commissioner Jennifer Belcher who will be present to dedicate two Ginkgo trees to *Liz Thomas* and *Sue Goff*. Liz and Sue are co-authors of *South Bay Its History and its People. 1840 - 1940* printed in 1986 by the South Bay Historical Association. Liz, also, was a past president of the Society.

Bessie Yates Miller was an active member and supporter of the plant dedication program. Her estate has given a bequest to the Society in her memory. Bessie's favorite plant was the rhododendron and her's will be planted in the Gallagher Garden.

Hazel and Abner Huckee are fondly remembered as the people who lived in the Gallagher House when it existed at Carpenter Road and Pacific Avenue. Their flower gardens excelled and were shared with all. A rose bush, Hazel's favorite, will be planted beside the house in their honor.

Lacey City Employees planted a rhododendron to honor the wife of one of their members, *Liane Joseph*, who died suddenly last September 2000 in a tragic car accident.

A special replanting for *Juanita Hick's* *Kerria Japonica* bush by her son *Dick Husk* will place the new plant closer to her bench in "The Remembrance Place"

Our gratitude goes to the Natural Resources class and their teacher, *Ken Marmion* at South Sound High School, N.T.S.D., for the mapping and planting for this April 29, 2001 dedication.



The Memorial Albums that record the 124 people who are honored by the Society are progressing into the new archival-safe books. *Norma Husk*, *Molly Springer*, *Eunice Walker* and *Eileen Coutare* have been meeting weekly to organize all the photos.

We find that there are some missing pictures that perhaps others have in their collections or can help us locate. *Please help if you can!*
